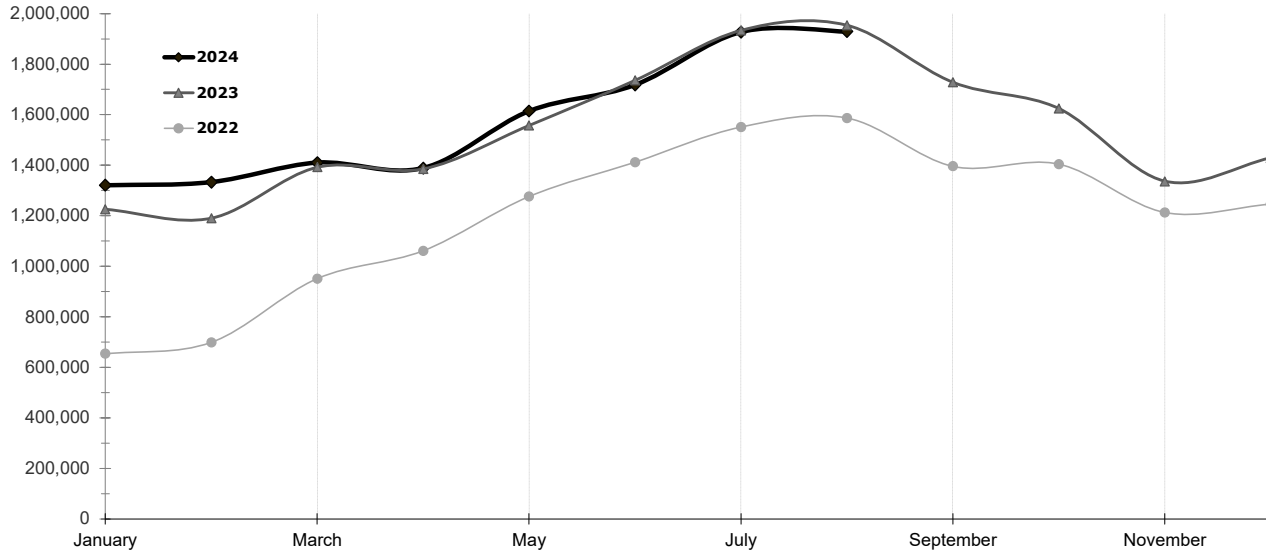


CALGARY INTERNATIONAL AIRPORT LOCAL E&D PASSENGER STATISTICS¹

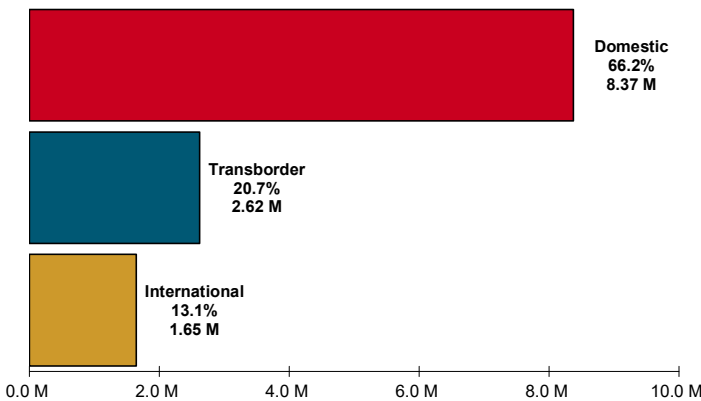
	% Δ 2020	% Δ 2021	2022	% Δ	2023	% Δ	2024	% Δ
January	-2.9%	-81.0%	653,700	155.1%	1,226,098	87.6%	1,320,799	7.7%
February	-0.5%	-85.6%	698,846	264.2%	1,190,423	70.3%	1,333,245	12.0%
March	-45.1%	-72.7%	951,136	327.2%	1,392,200	46.4%	1,410,197	1.3%
	-17.0%	-80.8%	2,303,682	243.5%	3,808,721	65.3%	4,064,241	6.7%
April	-95.2%	208.1%	1,061,544	406.2%	1,385,673	30.5%	1,388,547	0.2%
May	-94.4%	134.5%	1,276,655	571.9%	1,557,941	22.0%	1,614,348	3.6%
June	-91.0%	123.8%	1,412,400	343.3%	1,735,533	22.9%	1,717,799	-1.0%
	-93.5%	146.5%	3,750,599	422.1%	4,679,147	24.8%	4,720,694	0.9%
July	-83.8%	121.3%	1,551,331	142.8%	1,933,998	24.7%	1,927,174	-0.4%
August	-79.3%	157.6%	1,586,758	65.7%	1,953,924	23.1%	1,929,182	-1.3%
September	-78.7%	150.5%	1,395,842	70.8%	1,727,936	23.8%	-	-
	-80.7%	144.6%	4,533,931	87.9%	5,615,858	23.9%	3,856,356	-0.8%
October	-77.3%	143.9%	1,404,179	74.6%	1,624,131	15.7%	-	-
November	-78.1%	177.3%	1,213,230	54.5%	1,336,681	10.2%	-	-
December	-80.1%	225.5%	1,246,438	33.5%	1,428,985	14.6%	-	-
	-78.5%	180.4%	3,863,847	53.1%	4,389,797	13.6%	-	-
Total (YTD)	-68.40%	11.47%	14,452,059	128.44%	18,493,523	27.96%	12,641,291	2.15%
					<i>12 Months Ended Aug '24 »</i>		18,759,024	6.37%

¹ E&D (enplaned & deplaned) statistics include non-revenue passengers. Figures are subject to change and may contain estimates (1.97% of the August 2024 results have been estimated).

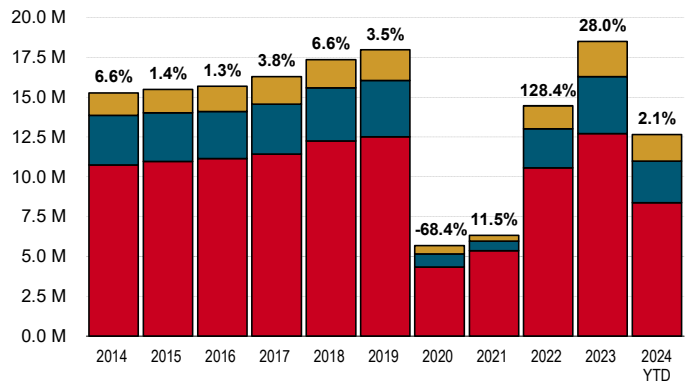
LOCAL E&D PASSENGERS BY MONTH



LOCAL E&D PASSENGERS BY SECTOR Year to Date August 2024



HISTORICAL E&D PASSENGERS 2014 - 2024



THE CALGARY AIRPORT AUTHORITY PASSENGER STATISTICS BY SECTOR

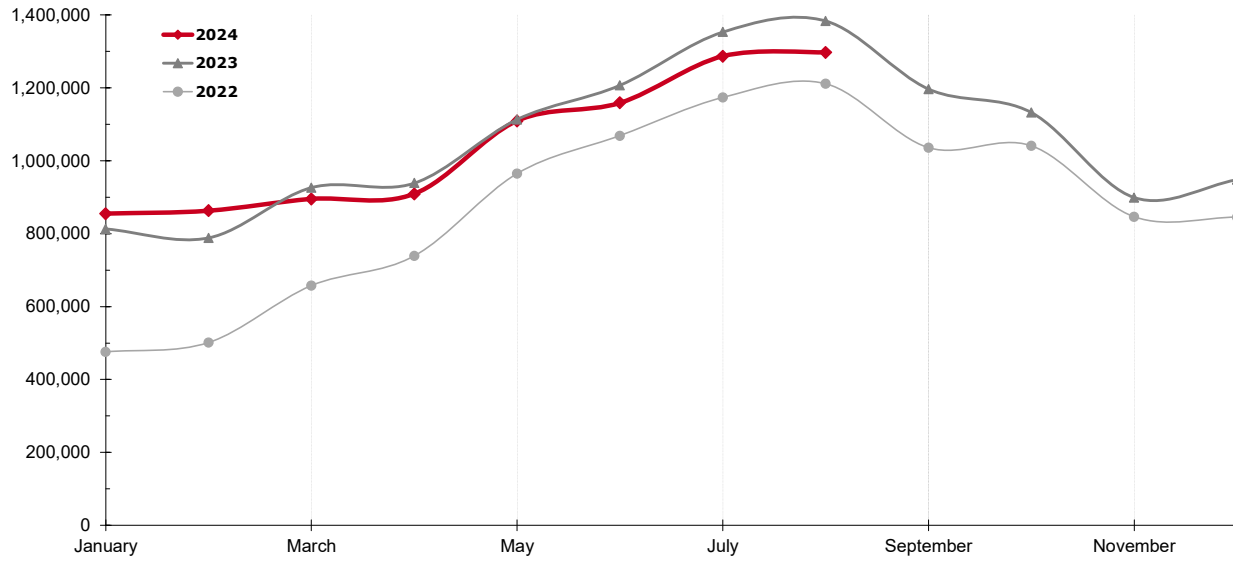
	% Δ 2020	% Δ 2021	2022	% Δ	2023	% Δ	2024	% Δ
A. Domestic Passengers								
January	-5.1%	-76.8%	475,444	130.0%	813,222	71.0%	855,036	5.1%
February	-1.4%	-79.8%	501,424	183.7%	788,360	57.2%	863,082	9.5%
March	-43.5%	-61.6%	657,659	211.6%	926,220	40.8%	895,116	-3.4%
	-17.3%	-74.3%	1,634,527	174.9%	2,527,802	54.7%	2,613,234	3.4%
April	-93.1%	194.7%	738,831	279.4%	938,902	27.1%	909,100	-3.2%
May	-92.6%	120.6%	964,978	457.8%	1,113,094	15.3%	1,109,278	-0.3%
June	-87.6%	115.7%	1,068,983	258.2%	1,207,140	12.9%	1,159,111	-4.0%
	-90.9%	135.5%	2,772,792	316.2%	3,259,136	17.5%	3,177,489	-2.5%
July	-78.3%	113.8%	1,174,145	97.2%	1,353,196	15.2%	1,286,563	-4.9%
August	-72.5%	144.2%	1,211,198	38.6%	1,383,272	14.2%	1,297,239	-6.2%
September	-71.5%	127.2%	1,036,016	46.7%	1,196,742	15.5%	-	-
	-74.2%	129.7%	3,421,359	57.3%	3,933,210	15.0%	2,583,802	-5.6%
October	-70.6%	111.8%	1,040,937	59.6%	1,132,140	8.8%	-	-
November	-71.4%	133.8%	846,260	43.8%	899,207	6.3%	-	-
December	-76.4%	199.1%	845,089	20.8%	948,213	12.2%	-	-
	-72.8%	144.5%	2,732,286	40.8%	2,979,560	9.1%	-	-
Total (YTD)	-65.32%	23.91%	10,560,964	96.42%	12,699,708	20.25%	8,374,525	-1.75%
12 Months Ended Aug 2024							12,550,827	2.1%

B. Transborder Passengers								
January	5.5%	-89.4%	95,549	220.0%	222,742	133.1%	265,893	19.4%
February	3.5%	-96.1%	116,817	971.4%	226,197	93.6%	275,331	21.7%
March	-51.3%	-93.9%	178,831	1802.9%	273,482	52.9%	304,412	11.3%
	-16.2%	-93.0%	391,197	679.9%	722,421	84.7%	845,636	17.1%
April	-99.4%	654.1%	202,532	1535.7%	269,749	33.2%	272,829	1.1%
May	-99.0%	418.3%	205,545	1417.6%	275,920	34.2%	301,102	9.1%
June	-98.7%	244.9%	233,139	1589.3%	340,159	45.9%	357,969	5.2%
	-99.0%	381.1%	641,216	1514.1%	885,828	38.1%	931,900	5.2%
July	-97.5%	244.9%	258,419	808.5%	382,788	48.1%	427,802	11.8%
August	-97.2%	479.9%	248,477	371.4%	373,680	50.4%	415,751	11.3%
September	-96.8%	623.3%	239,478	251.7%	342,910	43.2%	-	-
	-97.2%	457.9%	746,374	400.1%	1,099,378	47.3%	843,553	11.5%
October	-95.3%	615.7%	243,292	147.8%	324,218	33.3%	-	-
November	-92.8%	490.2%	218,052	86.1%	273,820	25.6%	-	-
December	-89.1%	333.5%	217,968	61.4%	280,622	28.7%	-	-
	-92.4%	441.3%	679,312	93.9%	878,660	29.3%	-	-
Total (YTD)	-76.81%	-27.92%	2,458,099	316.95%	3,586,287	45.90%	2,621,089	10.84%
12 Months Ended Aug 2024							3,842,659	17.0%

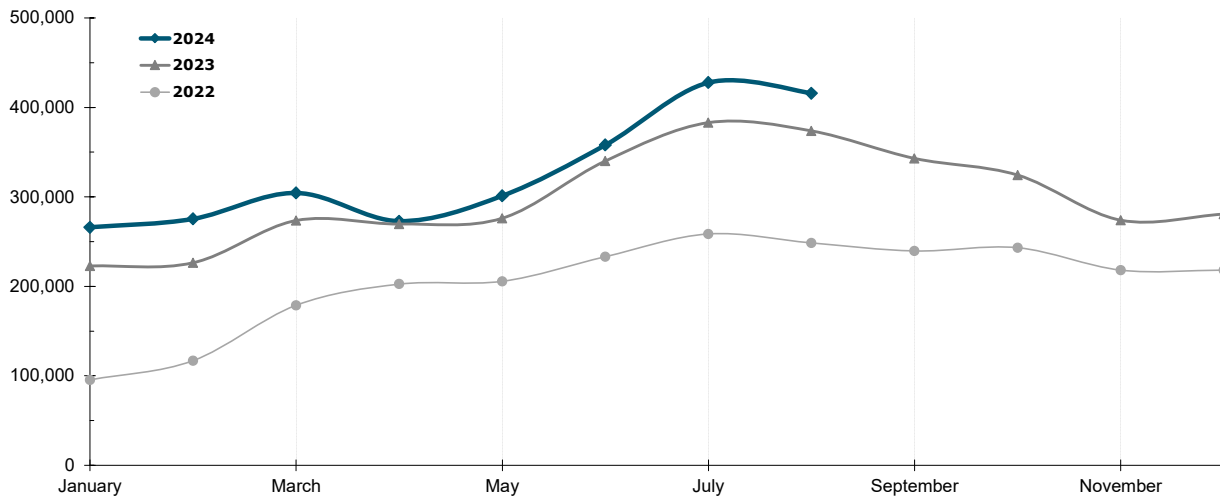
C. International Passengers								
January	-3.6%	-89.0%	82,707	321.5%	190,134	129.9%	199,870	5.1%
February	-2.3%	-97.6%	80,605	1792.1%	175,866	118.2%	194,832	10.8%
March	-43.2%	-98.0%	114,646	5161.4%	192,498	67.9%	210,669	9.4%
	-17.0%	-94.4%	277,958	966.6%	558,498	100.9%	605,371	8.4%
April	-99.8%	648.4%	120,181	4554.6%	177,022	47.3%	206,618	16.7%
May	-100.0%	#DIV/0!	106,132	29.6120565	168,927	59.2%	203,968	20.7%
June	-100.0%	#DIV/0!	110,278	1625.5%	188,234	70.7%	200,719	6.6%
	-99.9%	3505.8%	336,591	2605.7%	534,183	58.7%	611,305	14.4%
July	-98.8%	662.5%	118,767	687.4%	198,014	66.7%	212,809	7.5%
August	-97.2%	554.1%	127,083	312.8%	196,972	55.0%	216,192	9.8%
September	-95.8%	606.7%	120,348	179.8%	188,284	56.4%	-	-
	-97.3%	596.0%	366,198	312.0%	583,270	59.3%	429,001	8.6%
October	-93.1%	568.1%	119,950	122.7%	167,773	39.9%	-	-
November	-91.5%	585.4%	148,918	86.9%	163,654	9.9%	-	-
December	-86.8%	355.3%	183,381	85.0%	200,150	9.1%	-	-
	-90.1%	461.2%	452,249	94.4%	531,577	17.5%	-	-
Total (YTD)	-72.97%	-30.50%	1,432,996	297.98%	2,207,528	54.05%	1,645,677	10.62%
12 Months Ended Aug 2024							2,365,538	14.8%

THE CALGARY AIRPORT AUTHORITY PASSENGER STATISTICS BY SECTOR

A. Domestic Passengers



B. Transborder Passengers



C. International Passengers

